

## CORE SHELTER

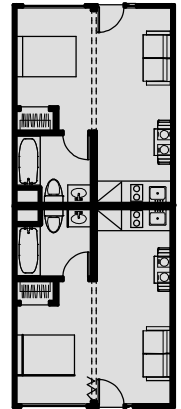
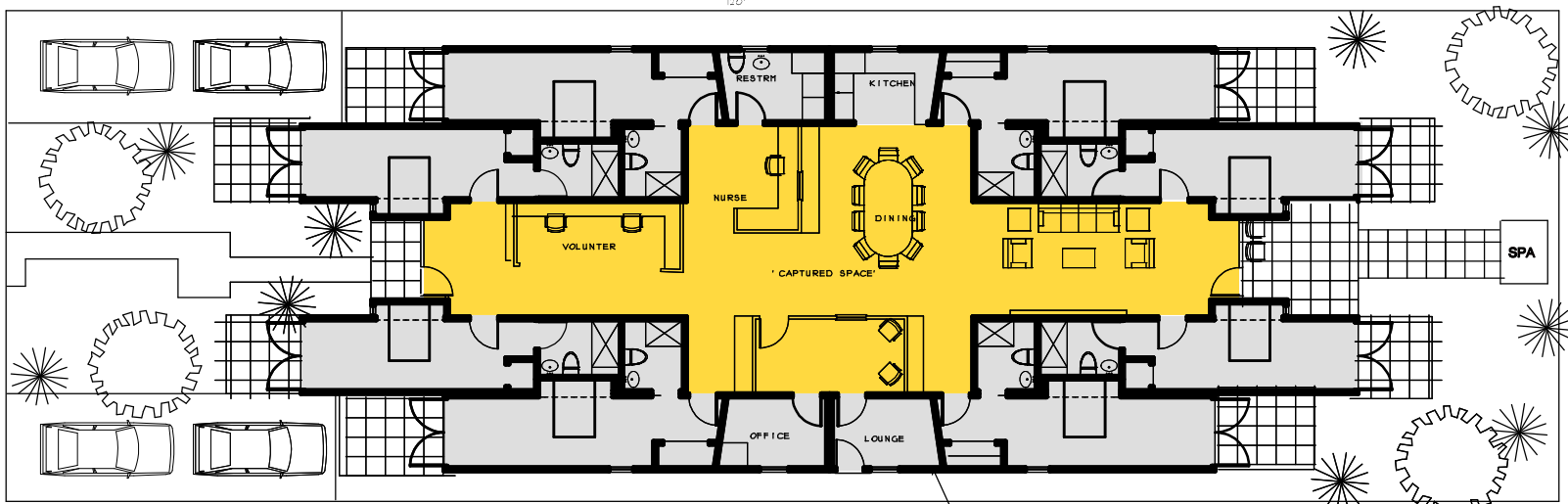
The CORE SHELTER system will be modeled after the automotive and computer industries allowing buyers to pick an off the shelf value engineered affordable home, based on their needs and location. We need to centralize construction and decentralize energy and storage production. We need to reverse the migration trend into over crowded cities with outdated infrastructure and no funds to build new systems, by giving people an option to live in a self sustaining downsized home, based on the current economic and health issues. This system will help buffer the coming environmental, economic, health and natural resource problems.

The concept of the hybrid container core house is to prefabricate the core and to build out the attached perimeter walls with hinged walls, roofs and on site low tech regional options such as adobe, earth coil strawbale, sip panels, bamboo, 3D printing or a future 'foamcrete' material that has high structural and insulation values.

The core could be a 4'x8' shell that fits in the back of a pickup truck all the way up to a 13'x32' section stacked vertically in a checker board fashion, "capturing" the white spaces as part of the unit in a multifamily building. Shipping container cores could also be used as the center of a framed house or modules for assisted living and condo units. The pre-fab core allows livable space to be captured, enclosed and surrounded in design options that reduce shipped pre-fabricated volume to the minimum required. Cores could be installed into a vacant retail building creating affordable housing by cutting away part of the roof and adding windows.

The core would contain finished bathrooms and a kitchen with hvac and hot water. It would be packed with as many state of the art items as possible or required, such as solar panels, batteries, plug-in wind, rain water collection. Off grid homes could have built-in kinetic energy systems, phase change materials, propane refrigerators, solar air to drinking water collection, composting toilets and hand crank clothes washing system. Gravity feed hot water showers and plant walls with installed drip systems.

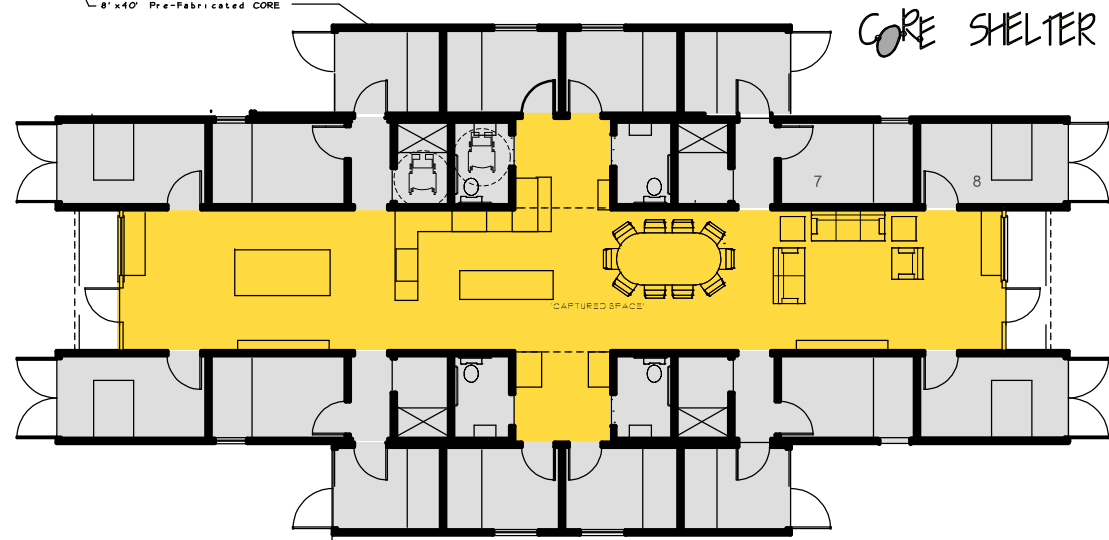
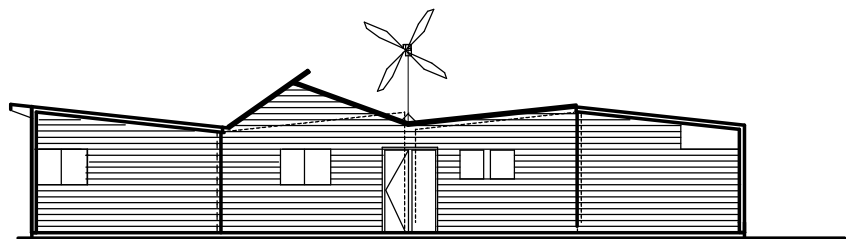
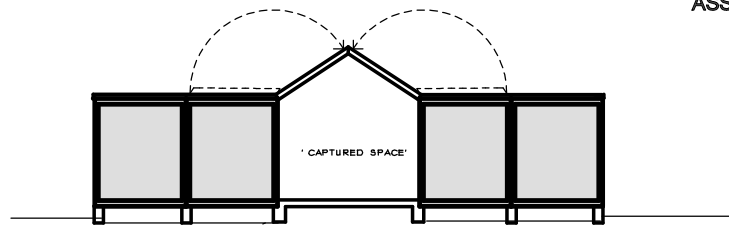
The purchase of a core could include a design plan for the low-tech perimeter area. The plan would use local construction methods and would address solar & wind orientation with passive solar thermal mass, ventilation and maybe even solar assisted geo-thermal heat pumps. The economy of scale of the packaged hi-tech combined with some do-it-yourself perimeter construction could provide the lowest cost shelter available.



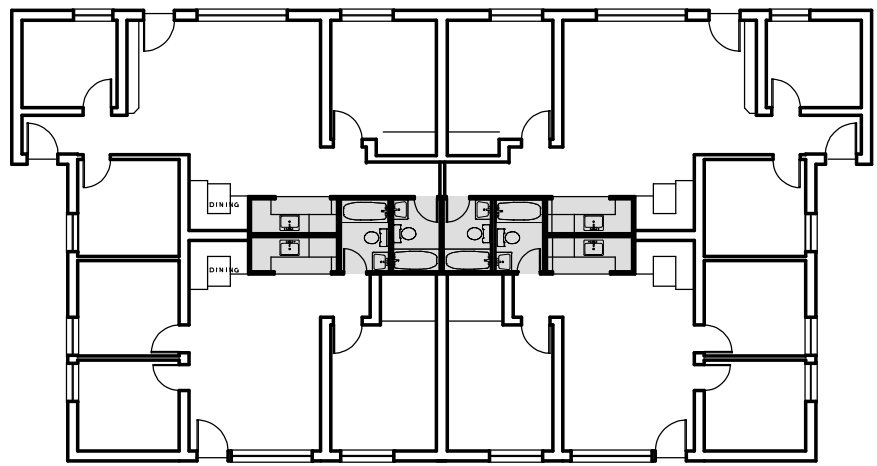
SRO UNIT

ASSISTED LIVING

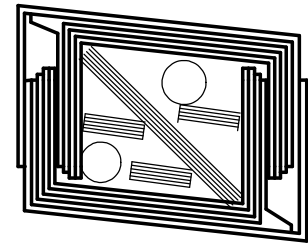
8'x40' Pre-Fabricated CORE



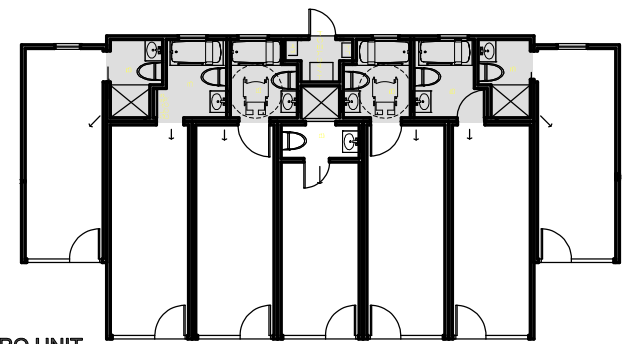
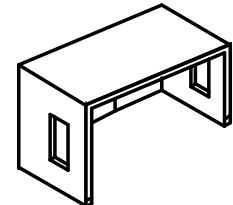
HOMELESS



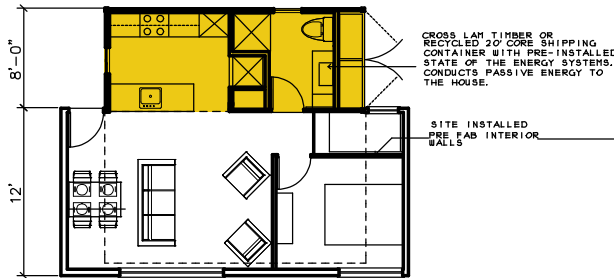
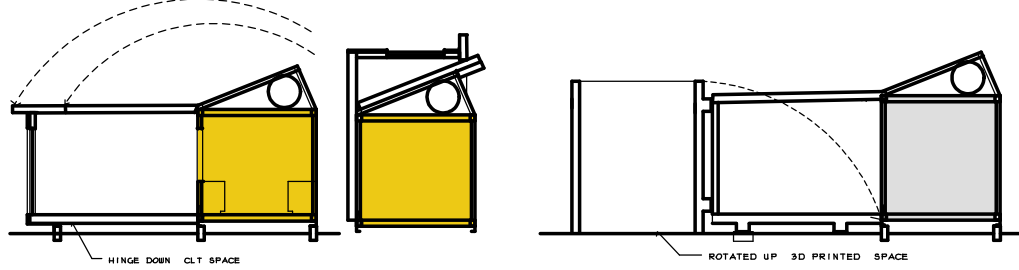
4 PLEX



FOAMCRETE POUR/SHIPPING PLAN

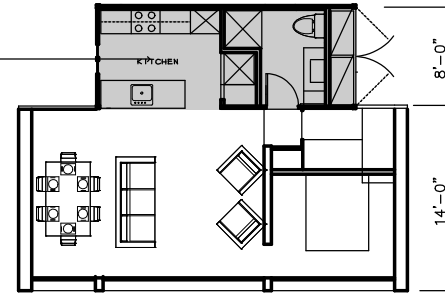


SRO UNIT

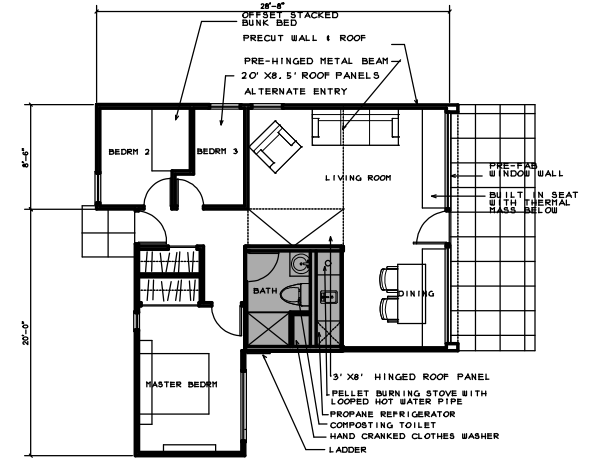
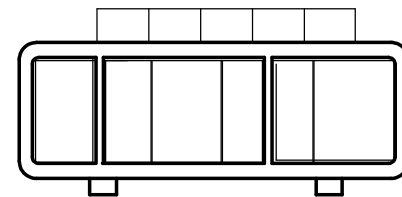
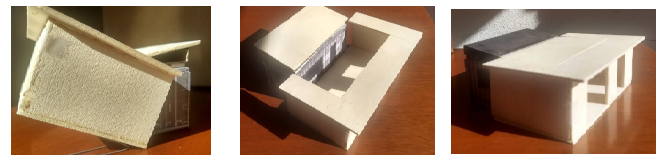


### HINGED CLT PERIMETER

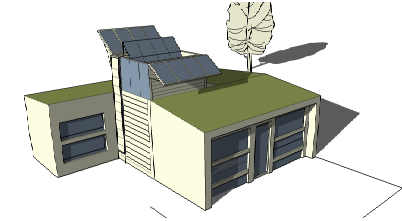
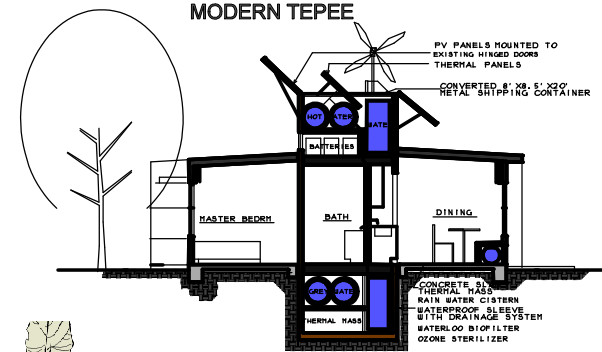
A PRE-FAB KITCHEN/BATH CORE WITH BUILT-IN SOLAR/WIND POWER AND SOLAR WATER HEATING/FILTRATION



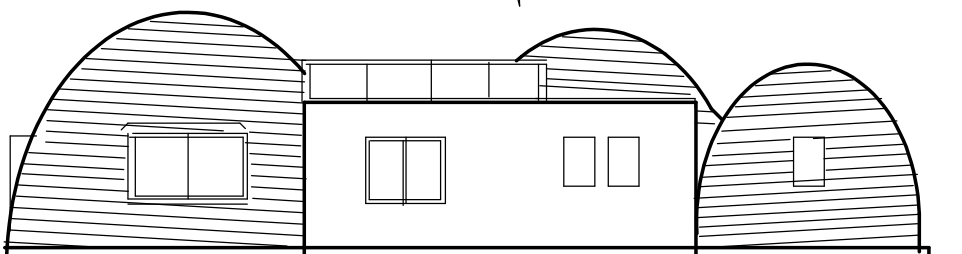
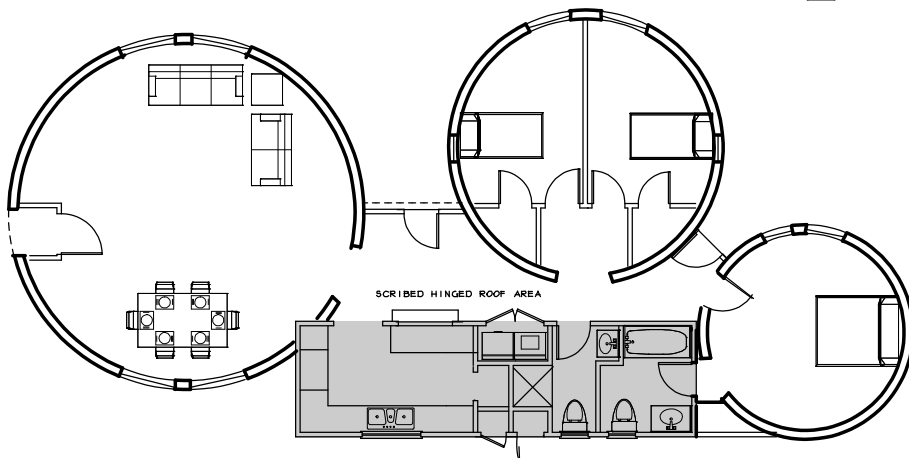
### ROTATE UP 3D PRINTED PERIMETER



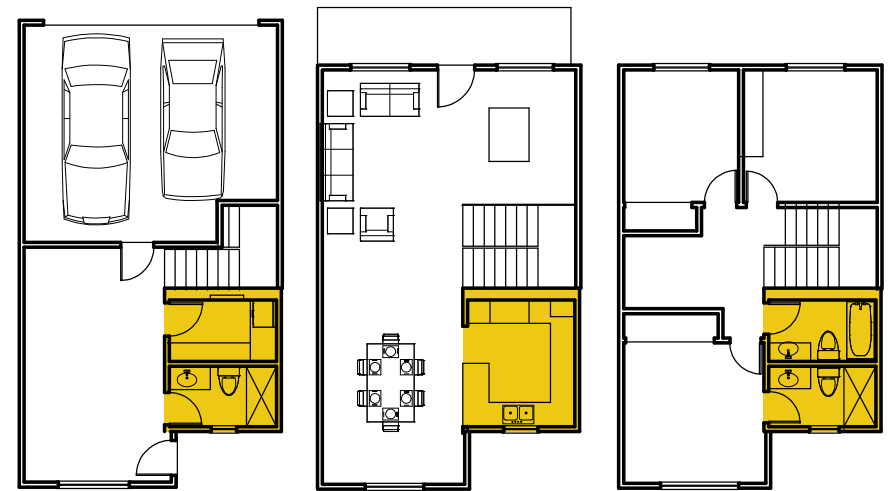
### MODERN TEPEE



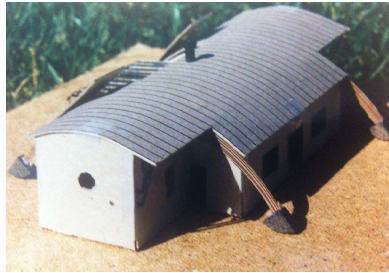
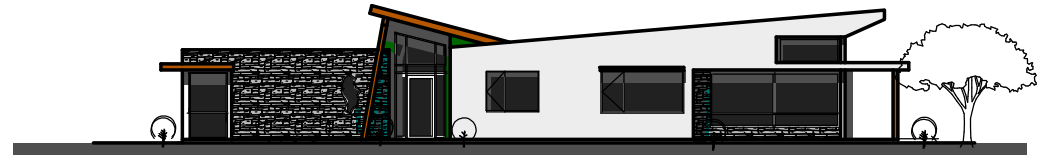
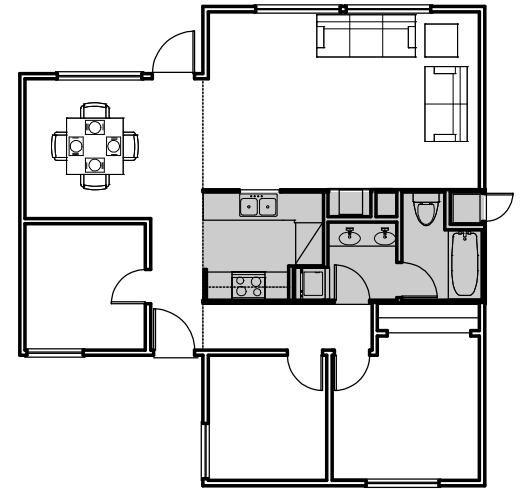
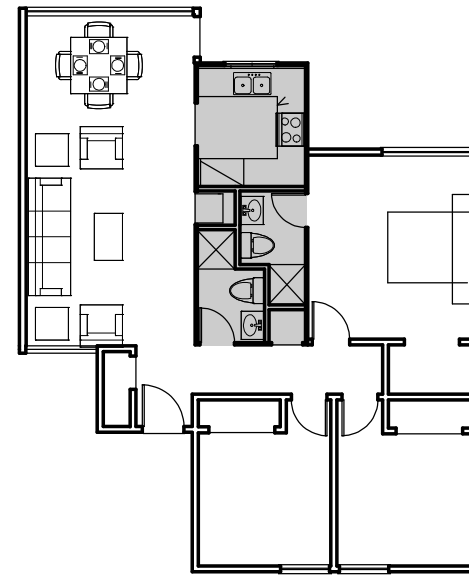
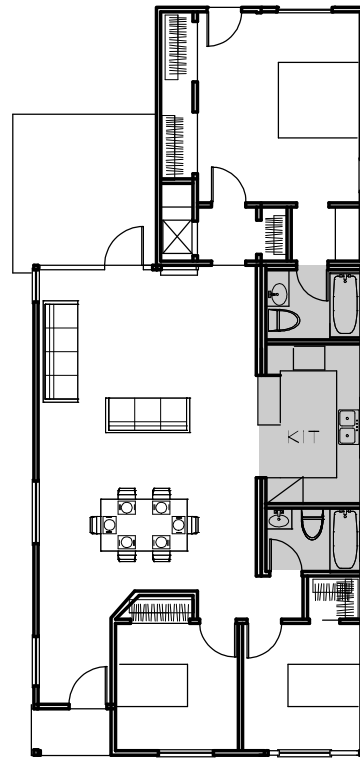
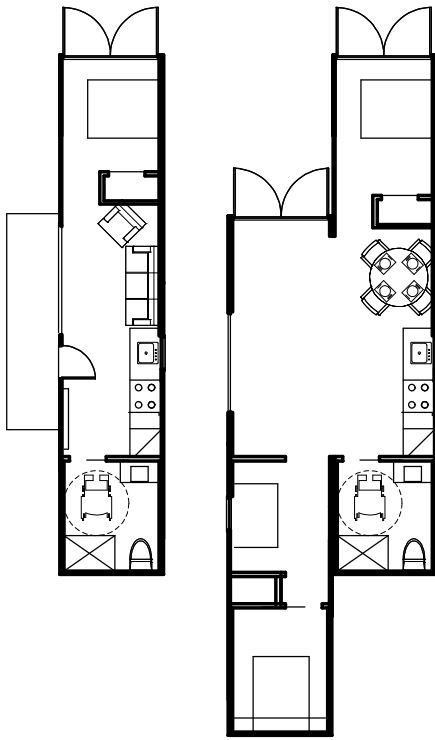
### CORE SHELTER



### EARTH COIL

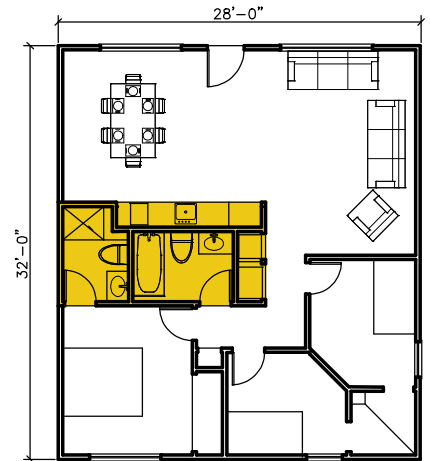
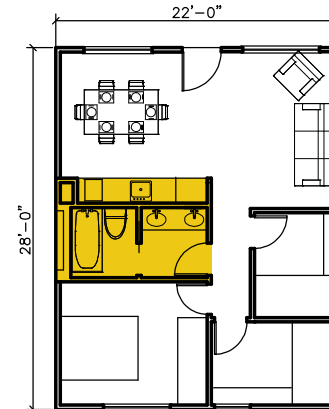
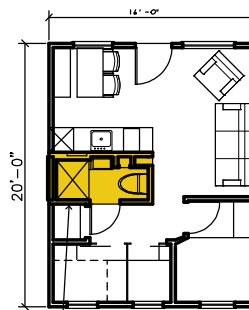
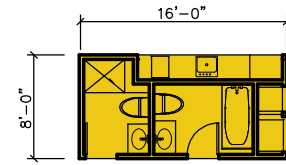
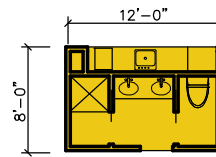
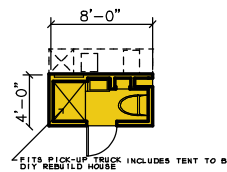


### TILT-UP CORE-3 STORY SMALL LOT



STRAW BALE

## SINGLE FAMILY DWELLINGS

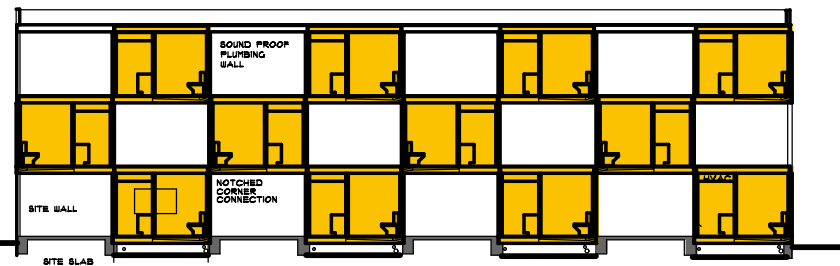
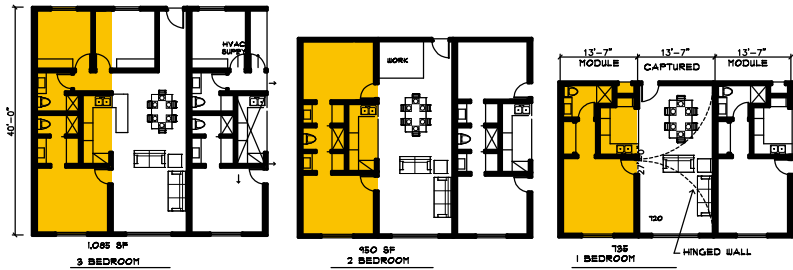


CORE SHELTER

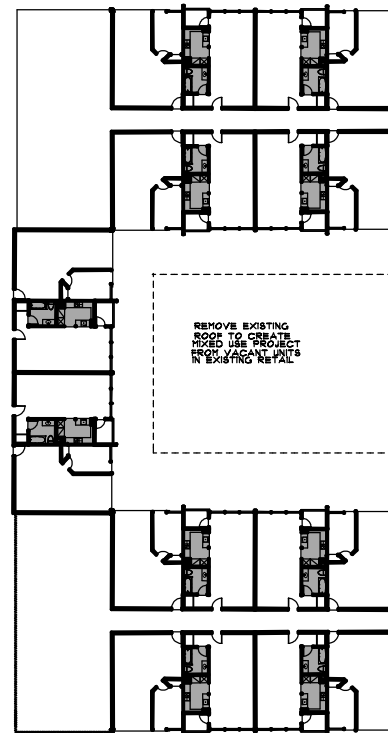


## EMERGENCY HOUSING

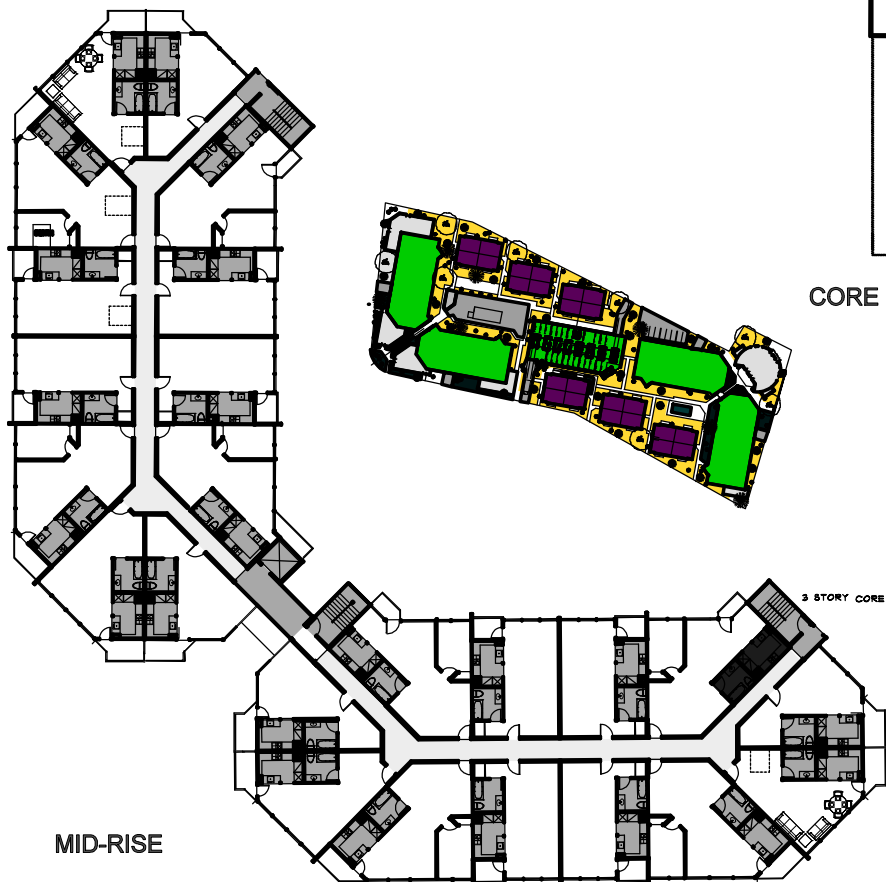




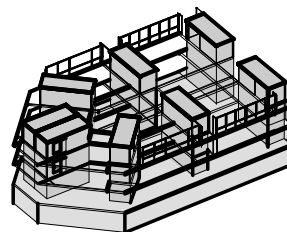
CHECKER BOARD MODULE SECTION



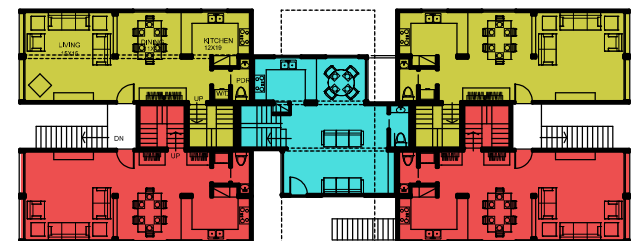
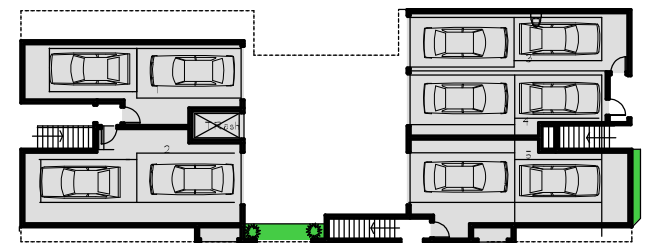
CORE INSERT-EXISTING RETAIL BUILDING



MID-RISE



INFILL TOWNHOMES



CORE SHELTER