



Riverside, CA

Adding Capacity to an Existing Shelter System

As its population of residents experiencing homelessness grew, the City of Riverside acted quickly to expand the number of beds at an existing shelter site.

The Challenge

The City of Riverside, California faced an urgent crisis – as of January 2020, more than 400 people were living unsheltered in the city. While the city was working on other plans to expand its shelter capacity beyond the 180 beds they had at that moment, elected officials were also seeking a rapid and emergency shelter solution for its residents facing homelessness.

“Everywhere you look, we have homeless people in Riverside. We need to help them.”

- Kevin, Riverside Resident



Photo Courtesy of The Press Enterprise



Solution

The City of Riverside worked together to build a temporary, emergency shelter community in the parking lot of an existing mass shelter. By adding capacity to an existing shelter site, the city was able to expand capacity quickly, allowing them to leverage the city's emergency shelter zone and existing services on the shelter campus.

In just four days, the Riverside community transformed a neighborhood lot into an emergency shelter community with 30 shelters, providing a stepping stone out of homelessness and into stability.



Project Timeline

Treating the situation as a crisis, Riverside moved quickly to build their Pallet community and provide shelter to residents.

2019

○ October 10

Pallet participates in Riverside's *Long Night of Arts and Innovation*, where the public and elected officials could learn about Pallet's personal shelters for people experiencing homelessness.

○ November 12

Riverside Mayor Rusty [Bailey begins to sleep in a Pallet shelter](#) to raise awareness for the urgency of the city's homelessness crisis.





December 17

Riverside City Council votes to approve a three-pronged emergency approach to addressing homelessness in the city, including Pallet's personal shelters for people facing homelessness.



2020



January 21

California Governor Gavin Newsom calls the state's law mandating that structures be at least 70 square feet a "bureaucratic hang-up" and "ridiculous," and the Riverside City Council unanimously votes to change the requirement, allowing Pallet's 64 square foot shelters.



February 18

Pallet's shelter units arrive at the Riverside shelter community.



February 21

All Pallet shelters are completely built and ready for residents to move in.





March 11

Riverside opens the new shelter community, introduces the service provider, and begins shelter intake for residents who will live in the community..



"These cabins will be especially effective in providing a new type of housing for homeless people who may be averse to a traditional shelter environment."

"This includes couples, people with pets, families with children who have aged out of the family shelter and individuals suffering from PTSD."

- Riverside Mayor Rusty Bailey

Community Features

The shelter site offers residents amenities from personal, secure shelter to on site case management.

- 30 personal shelters
- Personal climate control
- Dining on site
- Electricity
- Lights
- Electronics charging
- Mattresses and bedding
- Storage space
- Pet-friendly
- Toilets and showers
- 24-hour management
- Security on site

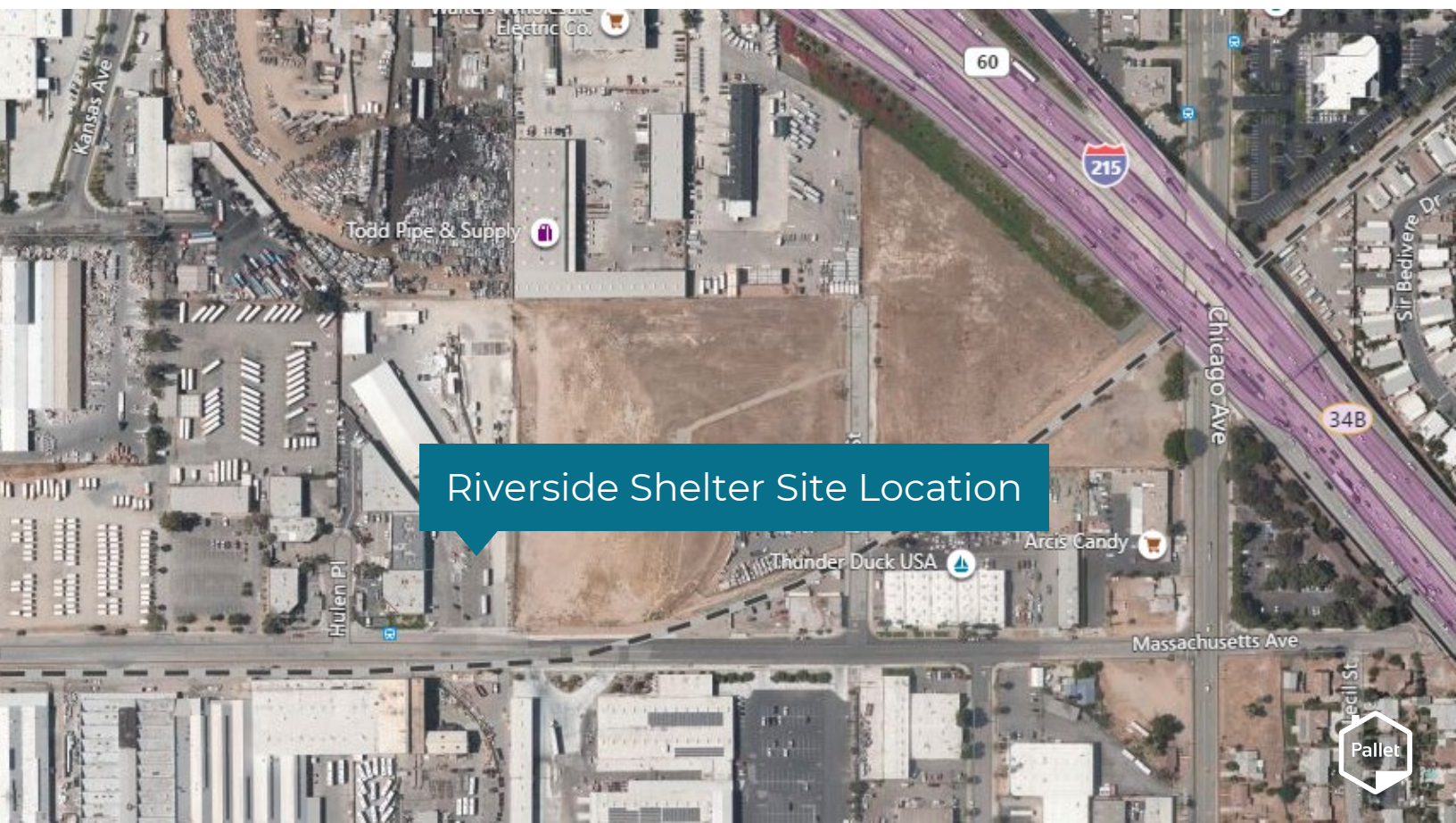




Photo Courtesy of City Net

Services On Site

The Riverside, CA site is managed by [City Net](#), a team of nonprofit professionals who work to end street-level homelessness through the coordination of community efforts and activities.

Services Provided by City Net Include:

- **Street Outreach:** Service delivery for the specific purpose of reaching out to unsheltered homeless neighbors to connecting them with emergency shelter, housing, or critical services.
- **Case Management:** On-site activities to assess housing and service needs for residents, such as intake, counseling, helping to obtain benefits, monitoring, and development of a personalized housing stabilization plan.

Results

In just four days, the Riverside community expanded shelter capacity by turning a mass shelter parking lot into a Pallet shelter community, providing a stepping stone out of homelessness and into stability.

“Riverside is addressing homelessness head on.”

- Riverside Mayor Rusty Bailey



NEW AT 5

CABIN VILLAGE UNVEILED; WILL PROVIDE
TEMPORARY SHELTER FOR HOMELESS PEOPLE

FLOORING INNOVATIONS LOCAL HEADLINES

RESTED IN THE SHOOTING DEATH OF A CATHEDRAL CITY M

NEWS
CHANNEL 3

5:17 PM

75°

More Information

For more information on the Riverside shelter project or partners involved in the community installation, contact:

Patrick Diller

Director of Business Development, Pallet
patrickd@palletshelter.com

Contact information for the city and services management available by request.

“I wish they had this when I was homeless with my kids, because we slept in the car.”

- Kaneesa, Riverside Resident

