



We believe everyone in the world should be able to afford a home.

This is madihome

Personalize your madihome

madihome is available in a variety of materials and solution to match your personal style.

Build your own **madihome**



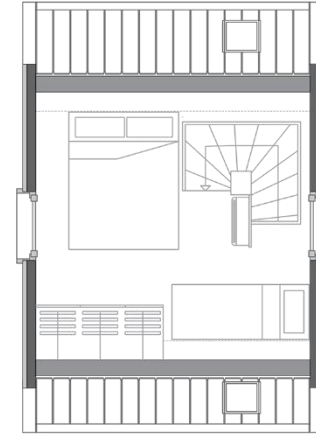
madihome models

CABIN

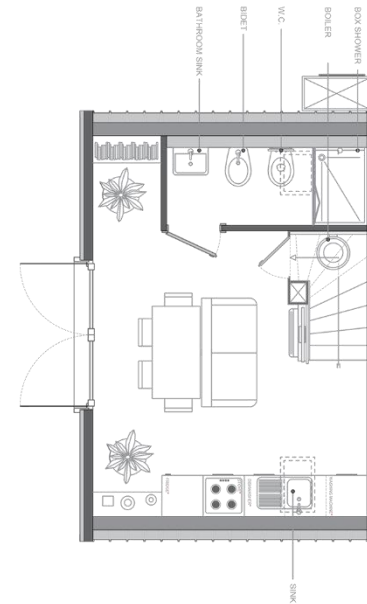
34 sqm



This is the basic model which can be used in numerous ways and applied to many different solutions. The internal dimensions are 34.00 square metres or 365.97 square feet.



2° FLOOR



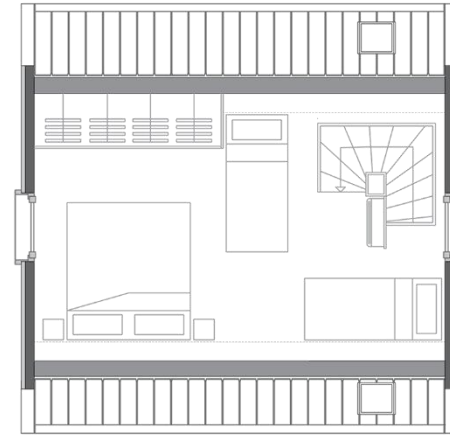
1° FLOOR

YOUNG

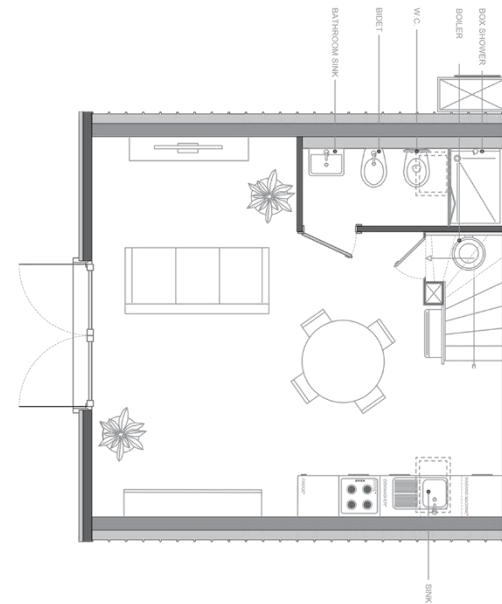
53 sqm



It consists of an open space house on either levels with a combined internal space of about 53.00 square metres or 570.48 square feet.



2° FLOOR



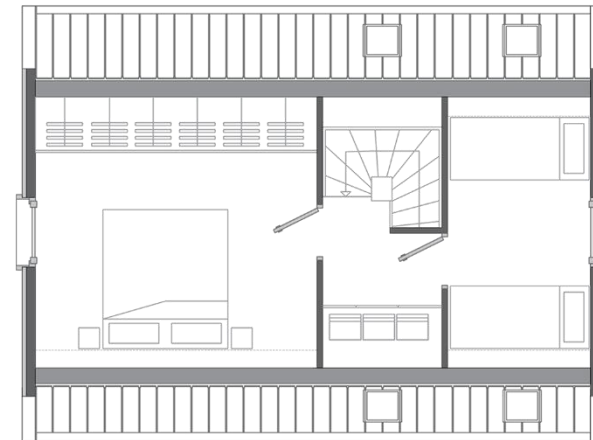
1° FLOOR

FAMILY

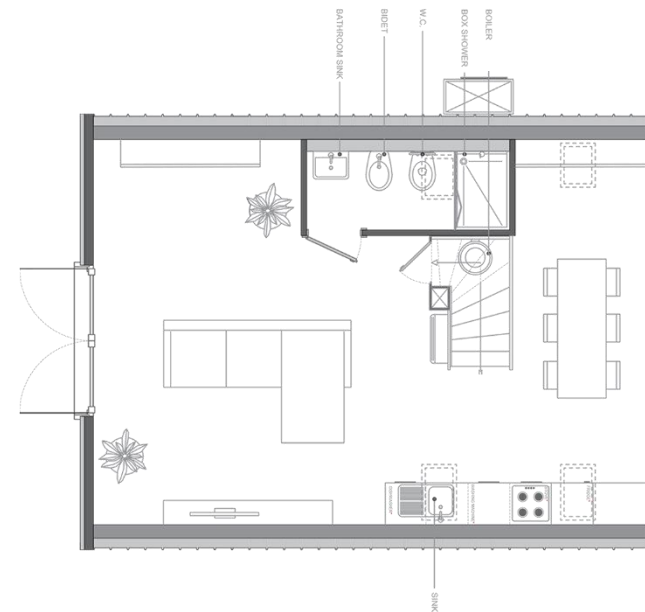
70 sqm



With our 2-bedrooms option, the possibilities are endless. To increase the size of your madhome simply keep adding more modules. This model provides a huge living space and an additional bedroom. The internal dimensions are 70.00 square metres or 753.47 square feet.



2° FLOOR



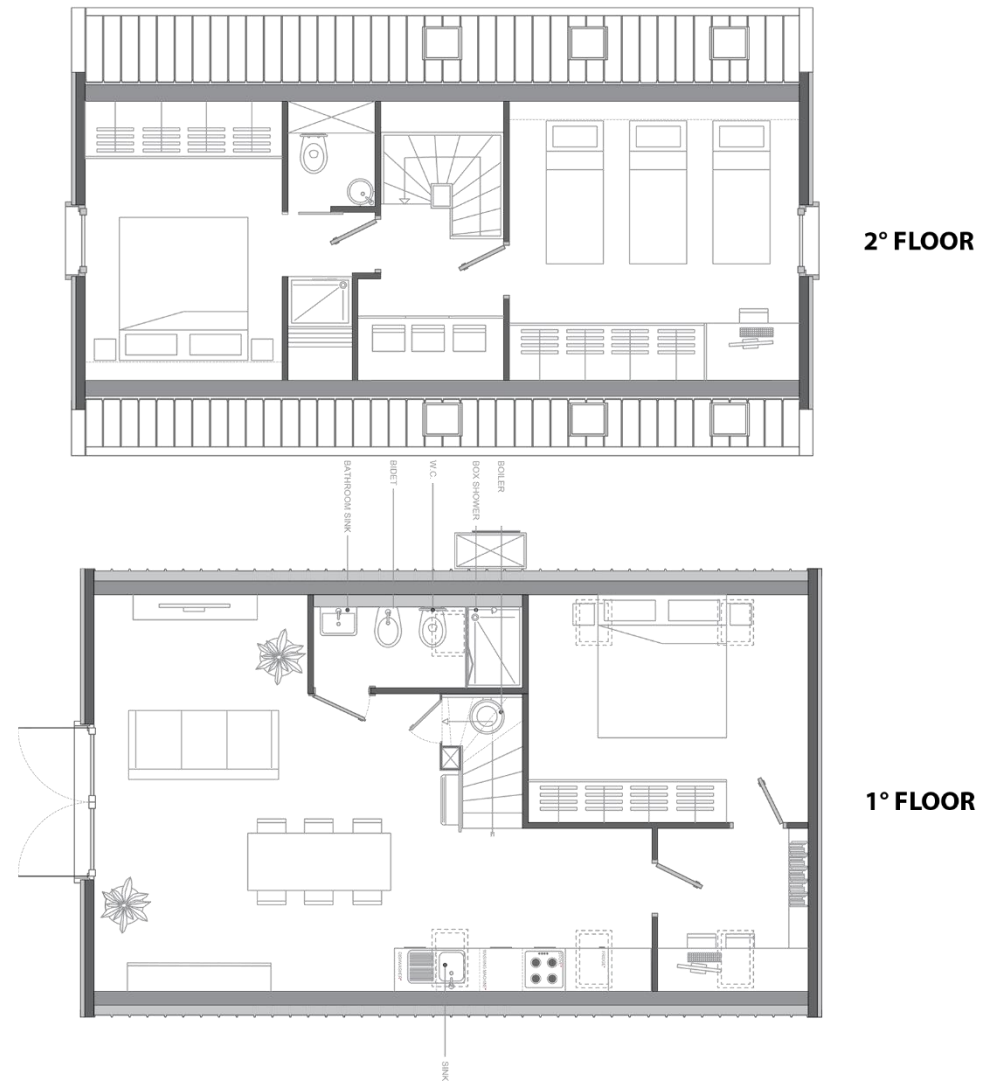
1° FLOOR

VILLA

86 sqm



This is the largest madihome standard model for residential purpose. This model provides an additional bedroom downstairs and an additional bathroom upstairs. The internal dimensions are 86.00 square metres or 925.70 square feet.



COMPONENTS INCLUDING

STRUCTURAL WOOD

Timber frame panels	OSB 3 mm 12 KVH C24 6x16
Slabs	Rockwool insulation th. 160 mm pa = 40 kg/mc
Walls	Fermacell mm 10
Roof	Tempera painting

STRUCTURAL STEEL

Laminate	S355JR steel hinges and profiles Hot-dip galvanizing protective treatment according to EN 1090-1 and EN 1090-2
Profiles	Standard hardware
Hardware	Screws class 10.9 Bolts class 8.8

PARTITIONS

Fermacell mm 10
KVH C24 6x8
Rockwool insulation th. 80 mm pa = 40 kg/mc
Fermacell mm 10
Tempera painting

PLUMBING SYSTEM

bathroom and kitchen	As per architectural drawings according to local regulation.
----------------------	--

THERMAL SYSTEM

High efficiency air conditioning system properly sized with external operating temperatures +40/-25
Electric water heater 80 lt storage tank

ELECTRICAL SYSTEM

As per architectural drawings according to local regulation.



metal panel



Painted corrugated metal coating.
Standard colors: dark brown-silver-pure white
Included



anthracite grey



dark brown



silver



oxide red

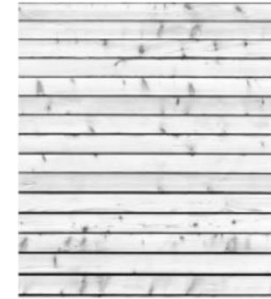


moss green

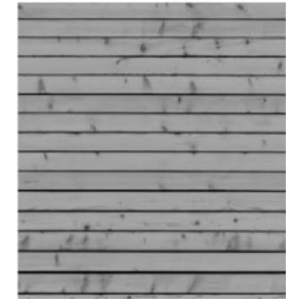


pure white

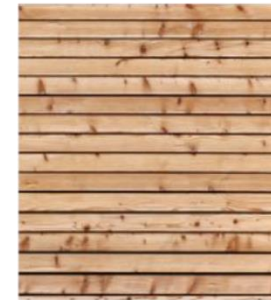
wood



white



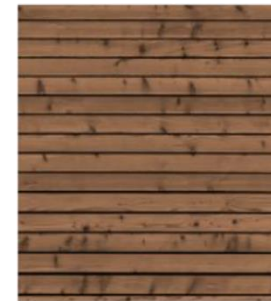
grey



natural



teak



walnut

Spruce shingle boarding. Treatment as UNI EN 351-1: 1998
Included

brick and stone



white brick



red brick



yellow stone



sand brick



carsic grey



carsic white

Made with a mixture of special binders of cement origin, light natural aggregates (clay, gravel, sand, pumice), coloring pigments stable to ultraviolet rays and additives that guarantee durability over time.

Included

windows

This PVC system is extremely versatile in terms of design and with top-level thermal and noise insulation performance.
Standard color: white

73 mm PVC profile

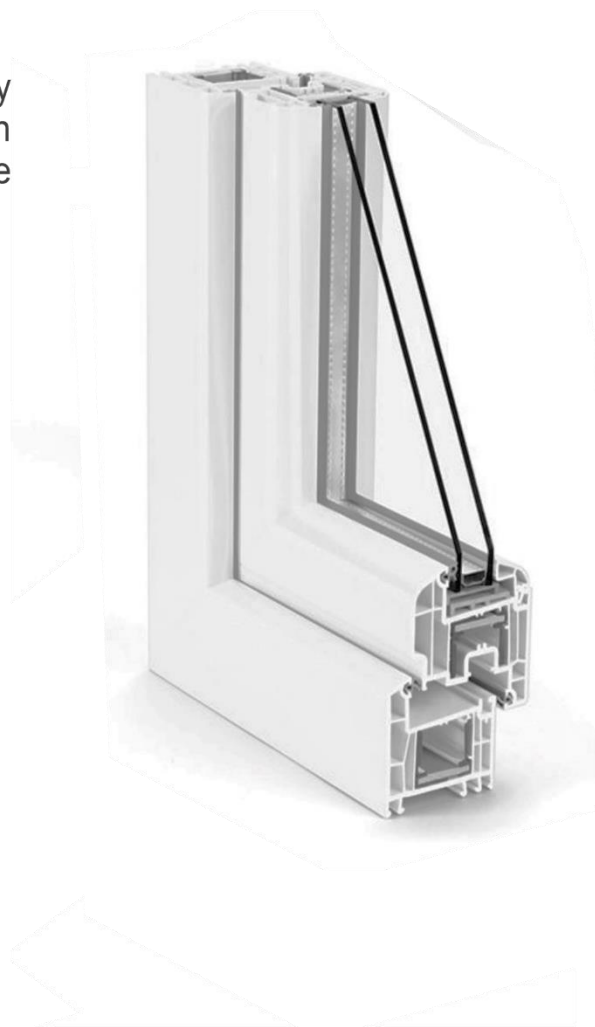
5 rooms

glasses: 4/20 Argon / 33.1 B.E.

glasses: 4/20 Argon / 33.1 B.E.

Performance: $U_f = 1,3 \text{ W/sqmK}$

RW glass 36 db



white



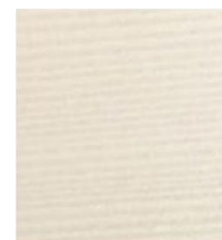
silver



dark grey



brown



white wood



walnut



teak



larch

Included

floor

laminate floor



oak grey



oak white



oak natural



oak brown



Laminate floor

Laminate is a multilayer material composed of high density wood fiber (HDF) and plastic material.

Vinyl floor

All the benefits of a floor, with the ease of maintenance and the hygiene of a vinyl floor!

Eco-friendly: recycled fiber from plastic bottles.

vinyl floor



dune white



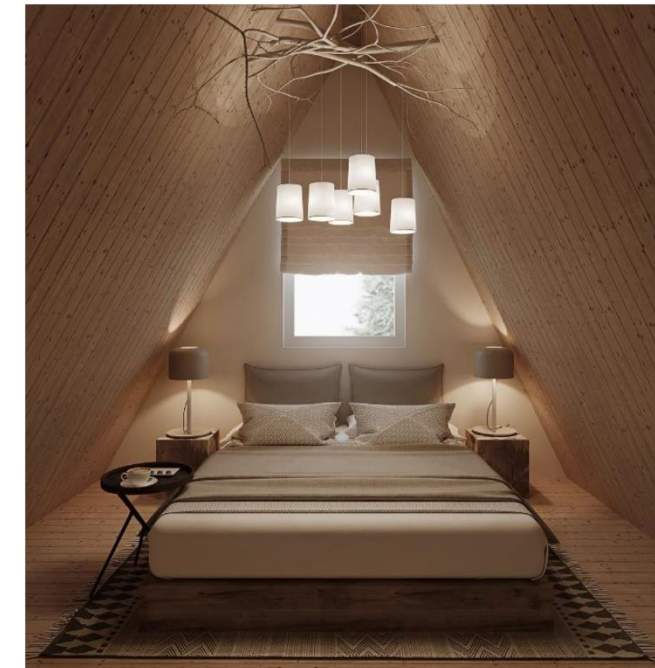
clear grey



harlem taupe

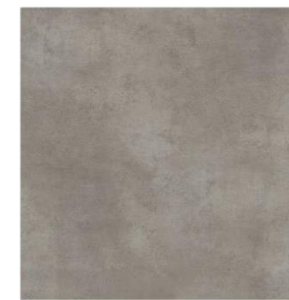


leon blue



Included

bathroom



harlem taupe



leon blue



dune white



clear grey

The bathroom is supplied complete with all the elements and accessories. Sink, WC, bidet and shower plate in ceramic and single-control mixer taps with chrome finish. The cladding on walls and the floor are in vinyl material, water resistant and non-slip.

**To consider as optional the possibility of installing a bathroom on the first floor equipped with shower, toilet and sink.*

Included



doors

Smooth door, with perimeter frame, cellular structure in dehydrated cardboard, both sides MDF covered in laminate.

Included



white



grey



oak dark



oak natural



oak white



oak red

heating and cooling

- A.** Inverter technology for energy savings of up to 60%, high silence, 4-level protection system, optimized cooling and airflow.

Air conditioning system appropriately sized with external operating temperatures $+40 \text{ }^{\circ}\text{C}$ \ - $-25 \text{ }^{\circ}\text{C}$

- B.** Electric water heater with 80 lt storage tank.



A



B

Included

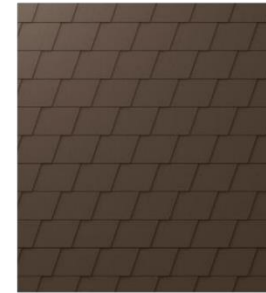
Optionals

roof

aluminum tiles



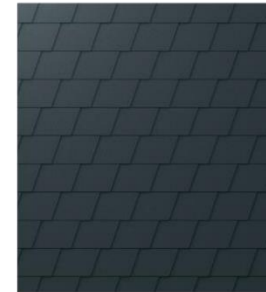
Tiles made of a special aluminum alloy and other precious metals. Very resistant, light. They do not fear oxidation and corrosion even in extreme conditions such as the marine environment to guarantee the beauty of the roof over time.



brown



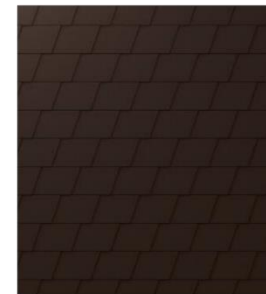
moss green



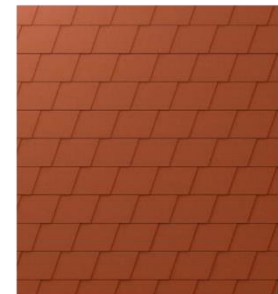
dark grey



grey



dark brown



old red

roof

bitumen tiles



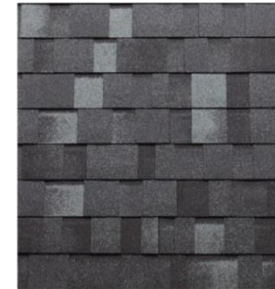
brown



grey



red



dark grey



green



blue

The bitumen tiles are composed of layers of different inorganic materials and waterproofed through the application of bitumen.

facade

aluminum



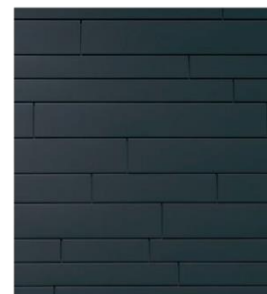
Cladding made of a special aluminum alloy and other precious metals, it is a very resistant, light. It does not fear oxidation and corrosion even in extreme conditions such as the marine environment to guarantee the beauty of the facade over time.



brown



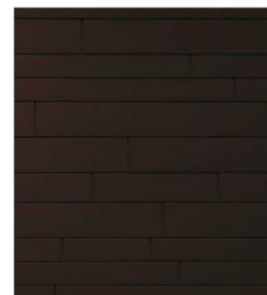
moss green



dark grey



grey



dark brown



old red

windows

This PVC system is extremely versatile in terms of design and with top-level thermal and noise insulation performance.
Standard color: white

82 mm PVC profile

7 rooms

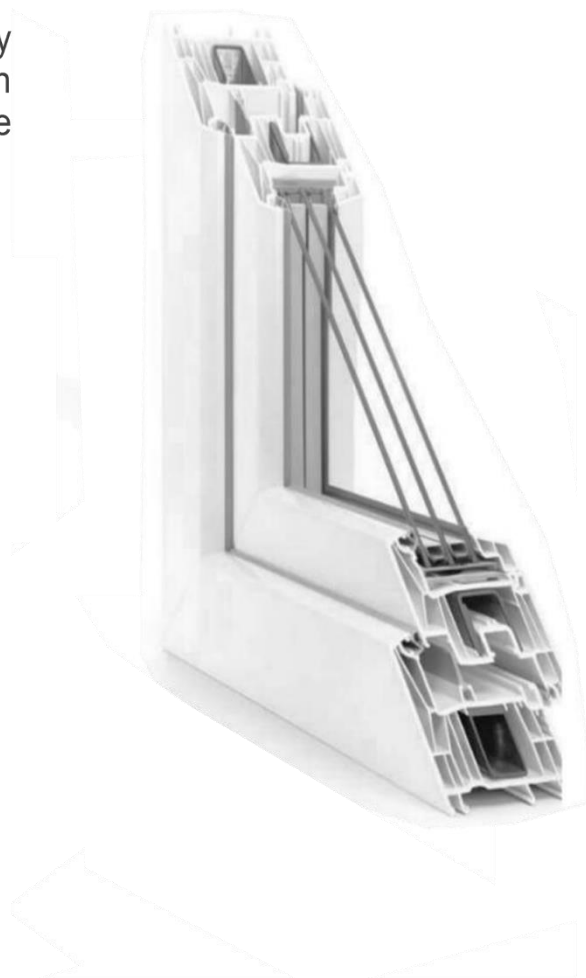
glasses: 4/20 Argon / 33.1 B.E.

glasses: 4/20 Argon / 33.1 B.E.

glasses: 4/20 Argon / 33.1 B.E.

Performance: $U_f = 0,86 \text{ W/sqmK}$

RW glass 50 db



white



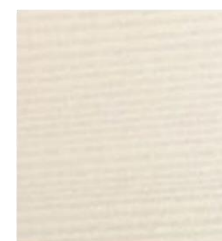
silver



dark grey



brown



white wood



walnut



teak



larch

external sliding door

dimension 400x215

The external sliding door saves space and permits an optimum utilization due to the opening system. Also in case of large dimension the hinged parts slide sideways with utmost ease.

73 mm PVC profile

5 rooms

glasses: 4/20 Argon / 33.1 B.E.

glasses: 4/20 Argon / 33.1 B.E.

Performance: $U_f = 1,3 \text{ W/sqmK}$

RW glass 36 db

82 mm PVC profile

7 rooms

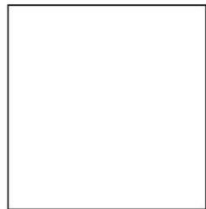
glasses: 4/20 Argon / 33.1 B.E.

glasses: 4/20 Argon / 33.1 B.E.

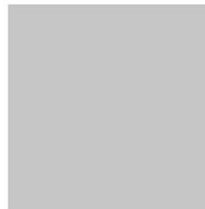
glasses: 4/20 Argon / 33.1 B.E.

Performance: $U_f = 1,0 \text{ W/sqmK}$

RW glass 50 db



white



silver



dark grey



brown



white wood



walnut



teak



larch

glass facade

PVC glass facade double or triple glazing.

73 mm PVC profile

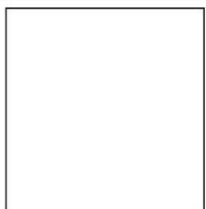
5 rooms

glasses: 4/20 Argon / 33.1 B.E.

glasses: 4/20 Argon / 33.1 B.E.

Performance: $U_f = 1,3 \text{ W/sqmK}$

RW glass 36 db



white



silver



dark grey



brown



white wood



walnut



teak

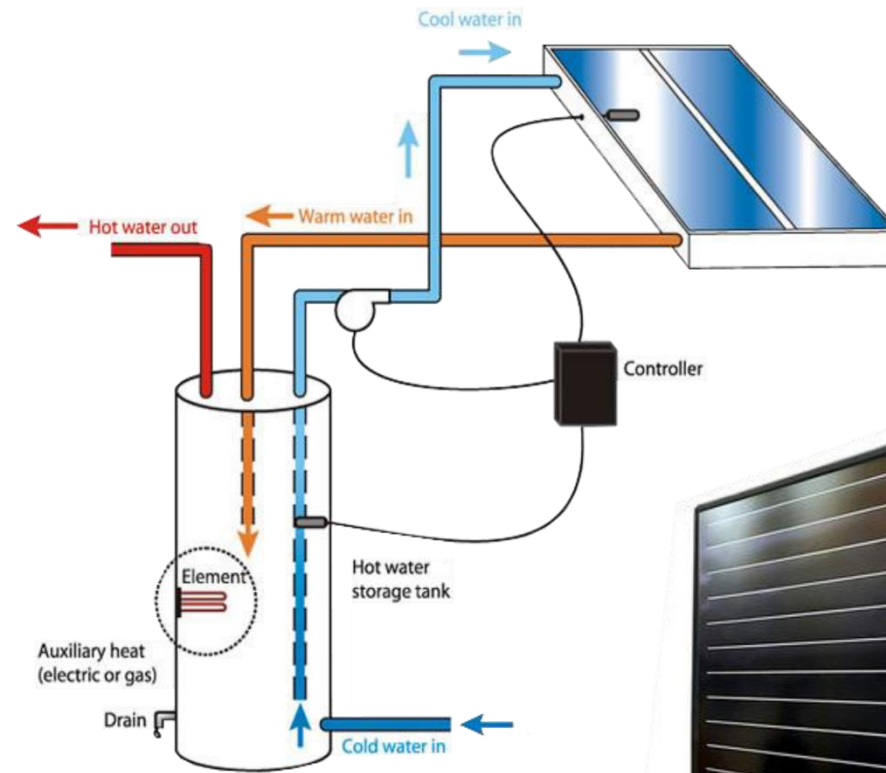


larch

solar thermal system

This solar thermal system makes it possible to use the sun to heat domestic hot water for a family of 4-5 people.

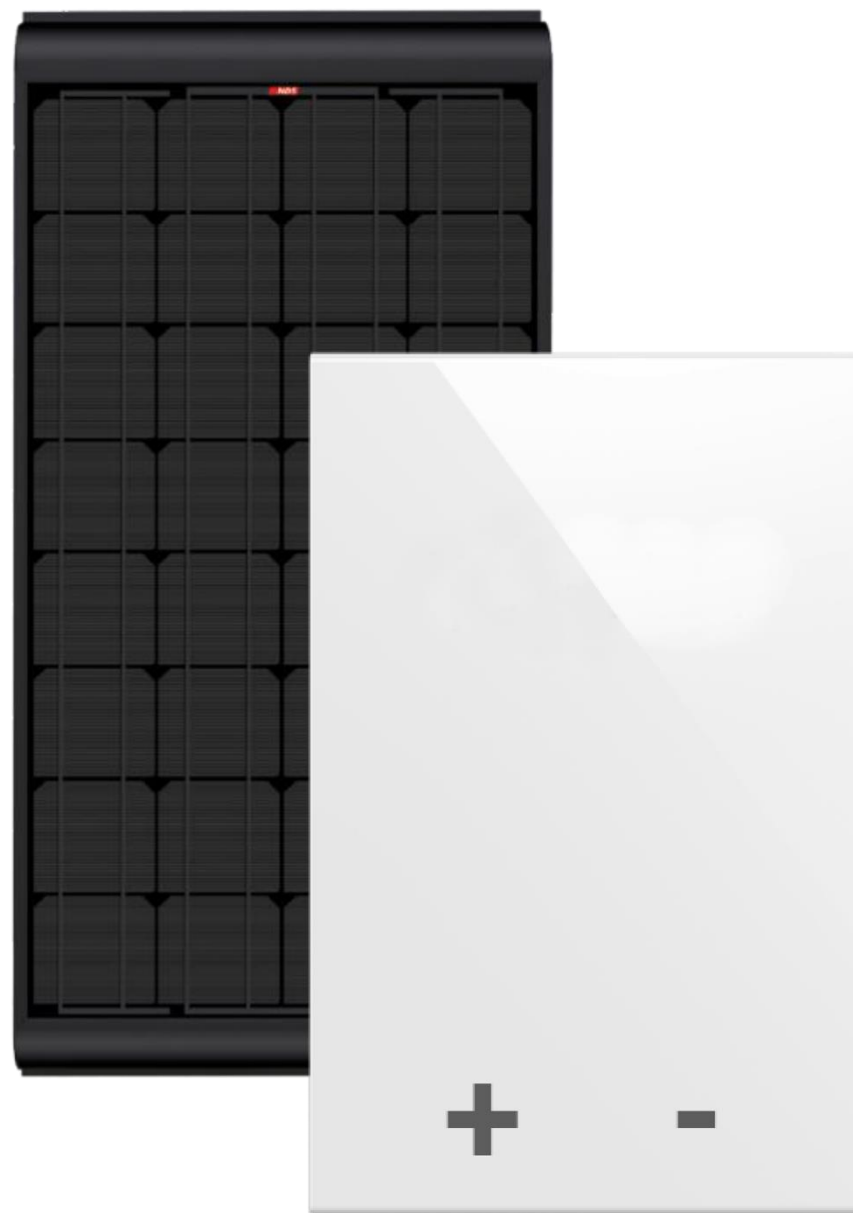
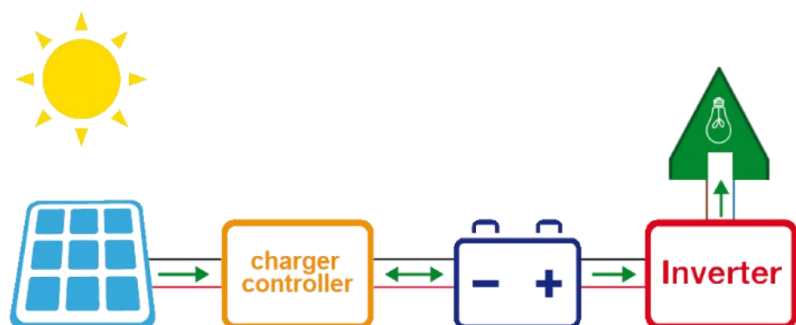
Solar thermal system kit consisting of flat panels for hot water production, water heater, electronic control unit and accessories.



green energy

Photovoltaic generator with a nominal peak power of 3 KWp flat polycrystalline silicon photovoltaic module, rated power 300Wp. Aluminum profile structure for 10 photovoltaic modules.

Station complete with inverter, renewable source management, lithium battery pack and interfacing with the electrical network. Single-phase system for "stand alone" operation with the possibility of automatic bypass to the electrical network.



home automation

The home automation kit transforms the M.A.D.I. home in a smart environment. Lights, scenarios, heating and security will be intuitively controlled.

Through a wall switch, a voice command or remotely via smartphone, tablet or PC, all domestic functions can be managed automatically according to a scheduled time, using the astronomical clock, or recalled by simply pressing a button.



screw piles system



Screw piles, sometimes referred to as dowels, screw-posts, helical piles, and helical anchors are a screwing beating and ground steel anchoring system used to build an alternative foundation. The screws are in galvanized steel and are sized according to the installation ground



veranda balcony



The veranda / balcony module allows you to expand the house to the outside having two covered spaces communicating with the interior giving you the pleasure of comfortably admiring the surrounding landscape.

madihome[®]

The beginning of housing revolution

www.themadihome.com